

Spool 202 Sofa

Design Rodolfo Dordoni

Technical Information



Outdoor sofas, chaise lounges and low tables where a closely spaced succession of cords, embracing a metallic tubular frame, creates sinuous lines that brings to mind weaving spools. The result is a collection with an explosive design, a perfect balance between strength and lightness that doesn't neglect the comfort of the seating that can accommodate an abundance of soft cushions. Protagonist of outdoor furniture, SPOOL colors the exteriors with the several variants and combinations available, leaving room for personalization.

TECHNICAL INFORMATION

DESCRIPTION
Sofa for outdoor use.

STRUCTURE
Powder coated stainless steel.

BACKREST
Polyester padded belt.

SEAT SUPPORT
Elastic belts fixed to the structure.

CUSHIONS
Standard or hydro draining.

WEIGHT

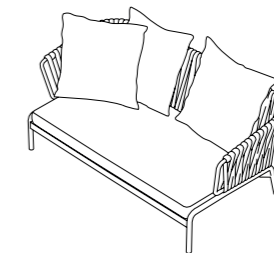
Structure	25 kg
Cushions (seat + back)	13 kg

STORAGE COVER
Available.

DIMENSION

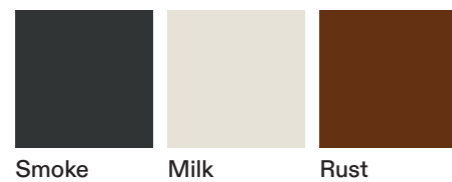
L 182 x P 97 x H 79 cm
H seat 38 cm

W 71" ³/₄ x D 38" ¹/₄ x H 31" ¹/₈
H seat 15"



Materials

METAL

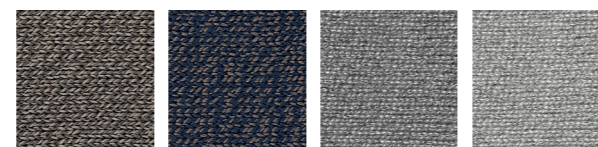


Smoke

Milk

Rust

PADDED BELT



Grey sand

Grey blue

Stone

Clay