

Lawrence 391 Stool

Design Rodolfo Dordoni

Technical Information



Among the outdoor armchairs, LAWRENCE stands out for being a simple product in appearance, but actually elegant, transversal, and timeless: a cotton cloth, proposed in mimetic colours that matches the outdoor furniture and the landscape, is enriched by a profile and by four pockets in leather which wrap the top of the isostatic vertics of the metal rod. The enveloping seat and the practical coordinated outdoor stool invite you to sit and relax at first sight. The form follows a function. And all this can be design furniture.

TECHNICAL INFORMATION

DESCRIPTION

Stool for outdoor use.

STRUCTURE

Powder coated stainless steel.

CANVAS

Cotton treated with teflon with leather inserts.

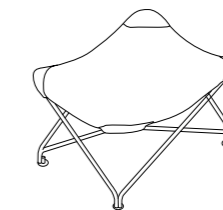
WEIGHT

Structure 4 kg

DIMENSION

L 76 × P 50 × H 45 cm

W 29" ⁷/₈ × D 19" ³/₄ × H 17" ³/₄



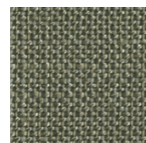
Materials

METAL

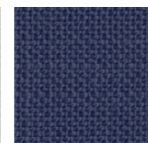


Smoke

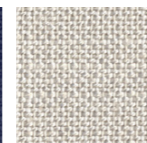
CANVAS



Green



Blue



Sand