

Barrique 002 Planter

Design unPizzo

Technical Information



Wooden slats, cords and belts combine to create elegant new surfaces, designed for RODA by unPizzo, a research studio specialising in the creation of weaves for furniture.

In the various BARRIQUE formats, iroko wood becomes an unexpected texture and belting creates a pattern completed by the fine cordage that outlines diamonds on the entire surface of the cylinder. Structure and decoration thus become a whole made of different materials, with the wood discovering a new form and role in this finely crafted accessory.

TECHNICAL INFORMATION

DESCRIPTION
Planter for outdoor use.

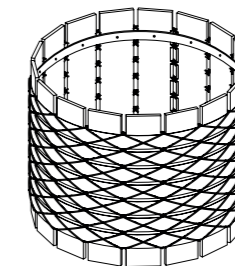
STRUCTURE
Iroko

CORDS
polyester or acrylic (cord Ø 3 mm)

BELTS
polyester (belt 16 mm)

WEIGHT
Structure 8 kg

DIMENSION
Ø 64 × H 50 cm
Ø 25" ¼ × H 19" 5/8



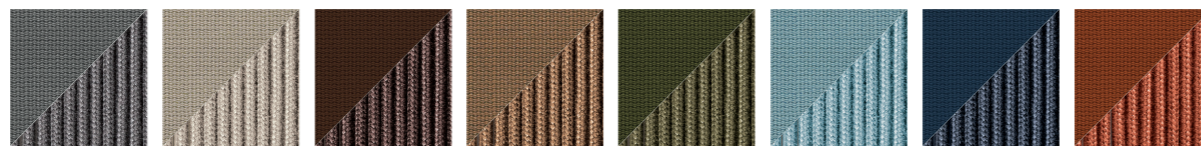
Materials

STRUCTURE



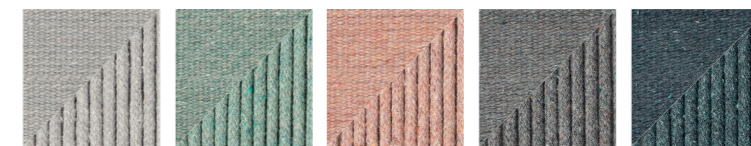
Iroko

BELT + CORD



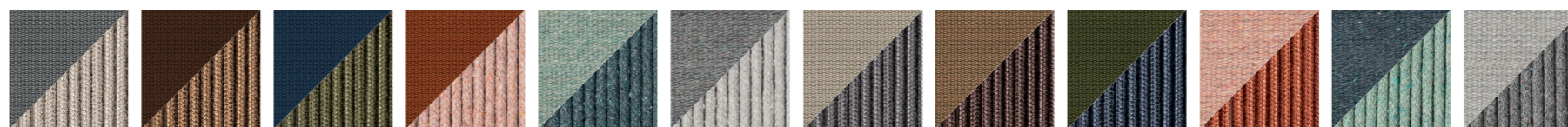
Grey Sand Brown Tobacco Olive Sky Blue Orange

BELT + RECYCLED CORD



Clay Mint Rose Stone Teal

BICOLOR



Grey+Sand Brown+Tobacco Blue+Olive Orange+Rose Mint+Teal Stone+Clay Sand+Grey Tobacco+Brown Olive+Blue Rose+Orange Teal+Mint Clay+Stone